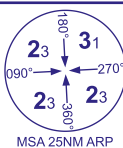


INSTRUMENT APPROACH CHART - ICAO

**BARRA RNP
RWY 15**
(ACFT CAT A,B)



AFIS 118.080

BARRA INFORMATION

AD ELEVATION

5

THR ELEVATION

4

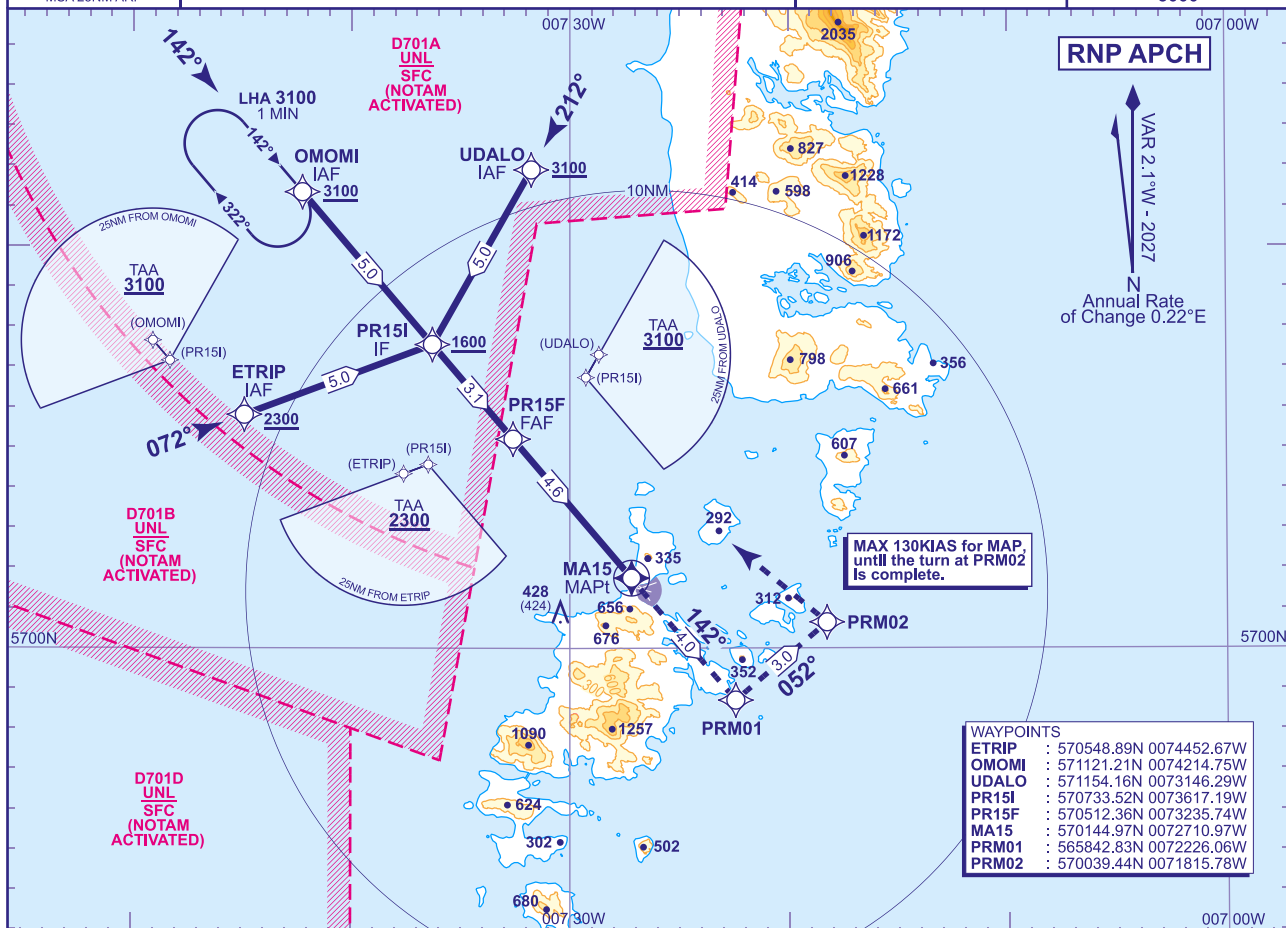
OBSTACLE ELEVATION

428 AMSL
(424) (ABOVE THR)

BEARINGS ARE MAGNETIC

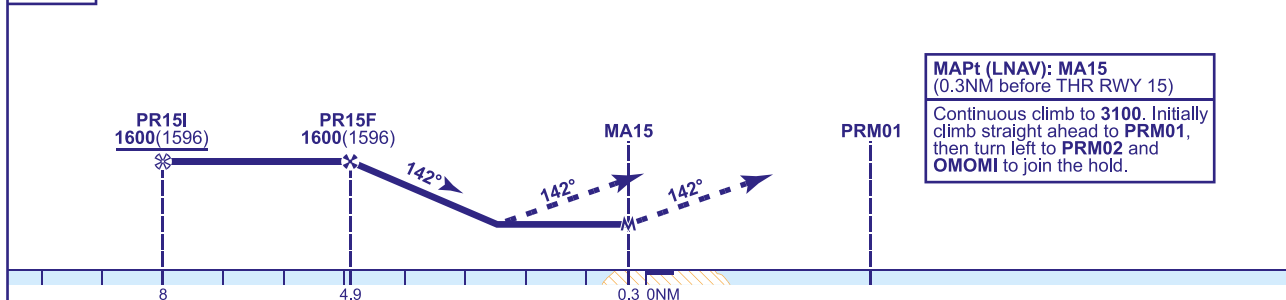
TRANSITION ALTITUDE

3000



RECOMMENDED PROFILE Gradient 5.24%, 320FT/NM

NM to MA15	4	3
ALT(HGT)	1410(1406)	1090(1086)
TCH 40		



Aircraft Category		A	B
OCA (OCH)	LNAV	800(796)	800(796)
VM(C)OCA (OCH AAL)	Total Area	Not Authorised	
	North of RWYs 250°M clockwise to 160°M	810(805)	810(805)

NOTE

- 1 High ground lies in the vicinity of the missed approach area. Do not depart from procedure unless in VMC.
- 2 Severe turbulence can occur when wind exceeds 30KTS at 2000 within the arc 160°T - 240°T.
- 3 Procedure interacts with Danger Areas EGD701A and EGD701B. Procedure not available when Danger areas are active.
- 4 Use of this RNP procedure is strictly PPR from the aerodrome operator.
- 5 Prior to commencing the procedure, pilots are to broadcast on AFIS 118.080 with flight details and intentions.

CHANGE (4/26): MAG INFO REVISED. MAG HEADINGS. CONTOUR VALUES CORRECTED.

AERO INFO DATE 30 JAN 26

AD 2-EGPR-8-1